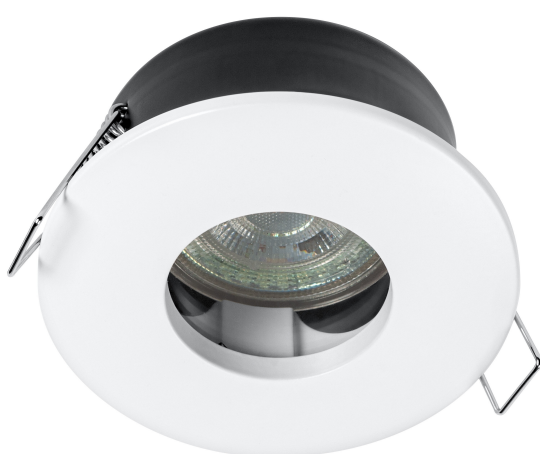


PRODUCT DATASHEET

RECESS GU10 4.3W 2700K White IP65

RECESS DOWNLIGHT IP65 TWISTLOCK GU10 | Recess ceiling light with GU10 lamp included and IP65



Areas of application

- Indoor applications
- Bathrooms

Product benefits

- Osram lamp included

Product features

- GU10 lamp included
- Type of protection: IP65
- Housing material: metal



TECHNICAL DATA

Electrical data

| | |
|---------------------------|-------------|
| Nominal wattage | 4.30 W |
| Nominal voltage | 220...240 V |
| Mains frequency | 50...60 Hz |
| Nominal current | 38.000 mA |
| Power factor λ | > 0.4 |
| Total harmonic distortion | < 20 % |
| Protection class | I |

Photometrical data

| | |
|--|------------|
| Luminous flux | 280 lm |
| Total luminous flux of contained light sources | 350 lm |
| Luminous efficacy | 65 lm/W |
| Color temperature | 2700 K |
| Light color (designation) | Warm White |
| Color rendering index Ra | 90 |
| Standard deviation of color matching | < 6 sdcn |
| Photobiological safety group acc. to EN62778 | RG1 |
| Beam angle | 36 ° |

Dimensions & Weight

| | |
|----------------|----------|
| Diameter | 85.00 mm |
| Height | 84.00 mm |
| Product weight | 200.00 g |

SPOT SET

Materials & Colors

| | |
|-----------------|----------|
| Product color | White |
| Housing color | White |
| Body material | Aluminum |
| Mercury content | 0.0 mg |

Application & Mounting

| | |
|--|----------------|
| Ambient temperature range | -20...+40 °C |
| Temperature range at storage | -20...+80 °C |
| Type of connection | Screw terminal |
| Type of protection | IP65 |
| Protection class IK (shock resistance) | IK02 |
| Dimmable | No |
| Mounting type | Recessed |
| Mounting location | Ceiling |
| Application environment | Indoor |
| Mounting diameter | 70,0 mm |
| With light source | Yes |
| Replaceable light source | No |
| Holder designation | GU10 |

Lifespan

| | |
|----------------------------|-----------------------|
| Lifespan L70/B50 at 25 °C | 15000 h ¹⁾ |
| Number of switching cycles | 100000 |

1) t[h]: L70 / B50 @ 25 °C (Ta), t[h]: L80 / B10 @ 25 °C (Ta), t[h]: L90 / B10 @ 25 °C (Ta)

Certificates & Standards

| | |
|--|-----------|
| Standards | CE / UKCA |
| Luminaire with limited surface temperature, "D sign" | No |

Additional product data

| | |
|-----------------------|---|
| Number of illuminants | 1 |
|-----------------------|---|




EQUIPMENT / ACCESSORIES

- Complete mounting and connecting accessories included

Safety advice

- All electrical connections must be made by a qualified person.
- Caution, risk of electric shock.
- The luminaires are not suitable for covering with thermally insulated material.
- Product in protection class I. All electrically conductive, metallic housing parts that can absorb voltage during operation or during maintenance in the event of a fault must be continuously connected to the protective earthing conductor.
- Check wall-ceiling for suitability. If uncertain, seek professional advice.

DOWNLOAD DATA

| Documents and certificates | | Document name |
|--|--|---------------------|
|  | User instruction / safety instructions | RECESS CEILING SPOT |
|  | Declarations of conformity | EC_SP SET |
|  | Declarations of conformity UKCA | SP KIT AND SET |

LOGISTICAL DATA

| Product code | Packaging unit (Pieces/Unit) | Dimensions (length x width x height) | Gross weight | Volume |
|---------------|------------------------------|--------------------------------------|--------------|----------------------|
| 4058075573031 | Folding box 1 | 91 mm x 93 mm x 96 mm | 242.00 g | 0.81 dm ³ |
| 4058075573048 | Shipping box 4 | 201 mm x 197 mm x 117 mm | 1168.00 g | 4.63 dm ³ |

The mentioned product code describes the smallest quantity unit which can be ordered. One shipping unit can contain one or more single products. When placing an order, for the quantity please enter single or multiples of a shipping unit.

DISCLAIMER

Subject to change without notice. Errors and omission excepted. Always make sure to use the most recent release.